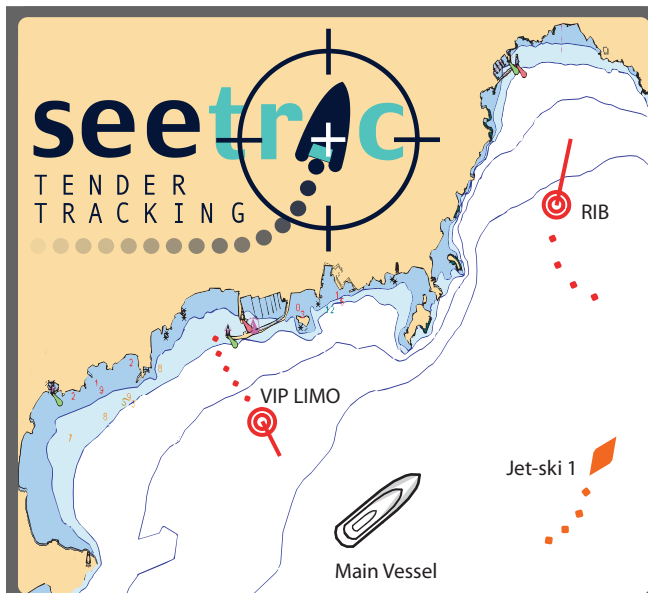
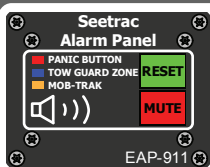


FRONT



Seetrac is a Ship Security system, tracking Tenders & Jet-skis. Supports Tender Depth, **PANIC** Button, **ON-TOW** & **MOB** alarms. Smart Base Unit with Digital processing, provides flexible integration



Alarms : Tender & Jet-ski **PANIC**, **ON-TOW** & **MOB**. Bridge mount audible panel & direct interface to main vessel alarm system



Tender Depth : Relay readings from the Depth Sounder on the Tender, direct to the chart system on the main vessel. "Scout" ahead into poorly charted anchorages, reefs



MOB-trak : real-time alarm & tracking of MOB targets. Enabling the first vital moments of a rescue to be co-ordinated by the professionals in the immediate area



Jet-trak : a jet-ski used irresponsibly is dangerous Call or Disable a jet-ski, remotely. Increasing confidence and safety. ECDIS & Handset operation



www.seetrac.com

Seetrac TTS-Tender Tracking System

REAR



Tender & Jet-ski Unit
Power Management &
hardware diagnostics

Latest Generation
Seetrac Base Unit (SBU)
integrates to
most charting systems

- Fully Integrated Digital Transponder System
- Interfaces with most major Electronic Chart Systems :
 - Transas NS 3000 ECS-I/ECDIS-I/NS 4000
 - Raytheon Pathfinder ECDIS
 - Kongsberg K-Bridge ECDIS
 - Nobeltec Admiral MAX Pro
 - Navmaster Professional/Superyacht
 - ARPA-for systems without a Seetrac interface
others coming soon-please visit the website for latest information
- License Free Transmission platform (EU/FCC)
- Range 5 NM+ (Sat-track option available)
- Jet-trak compatible, allowing RIC of Tenders
- Specialist applications :
 - MOB-trak interface (Real Time MOB tracking)
 - Docking Approach System (DAS)+(Wind&Tide)
 - Port security (Alarm status monitoring + IP report)
 - Anchor Buoy Tracking (Solar power supply)

Dealer contact details :

www.seetrac.com